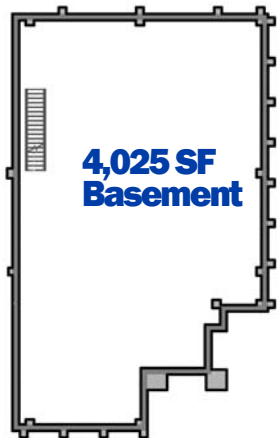
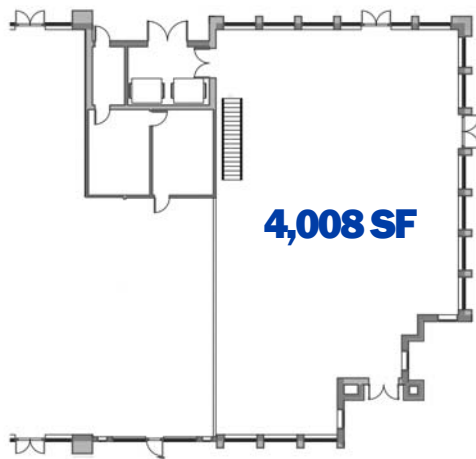


# Now Leasing: New 4,008 SF Restaurant with Patio The Shoppes at Simonds Park, Burlington, MA



Conceptual Photo Rendering



Conceptual Rendering

- Restaurant space available now
- 4,008 SF main floor (expandable to 5,300 SF); 4,025 SF basement
- Approved for 150 seats excluding patio
- Full liquor license available
- Generous tenant improvement allowance
- Pylon signage approved
- Traffic light installed on 3A

**CONTACT:** Michael Branton, Vice President Leasing  
781.418.6267  
MBranton@KeyPointPartners.com

[KeyPointPartners.com](http://KeyPointPartners.com)

**CONTACT:** Patrick Busa, Leasing Associate  
781.418.6251  
PBusa@KeyPointPartners.com

[KeyPointPartners.com](http://KeyPointPartners.com)



**KEYPOINT**  
PARTNERS  
unlocking value