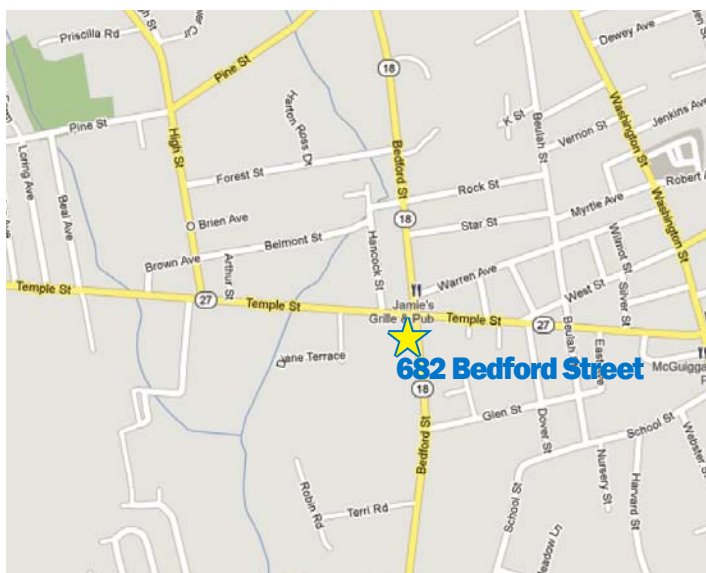
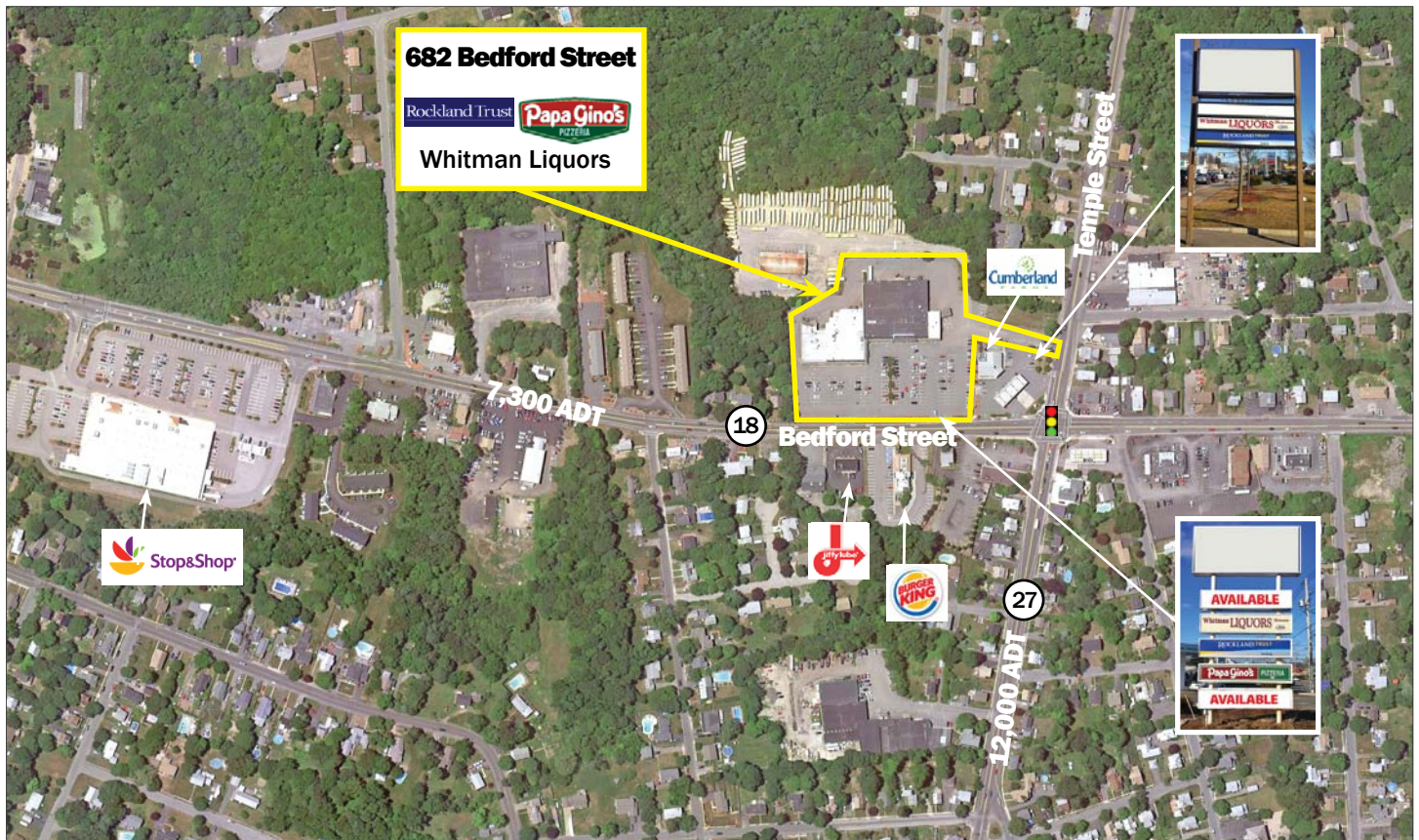


682 Bedford Street

Whitman, MA 02382

FOR LEASE

2,000 SF Available



PROPERTY HIGHLIGHTS

- Outstanding crossroads location at the intersection of Rt. 18 (Bedford St.) and Rt. 27 (Temple St.) at the center of the Town of Whitman
- Optimally located to effectively serve Whitman and surrounding communities
- Densely populated with 46,762 people within 3.0 miles
- Excellent visibility and accessibility from both Routes 18 and 27
- Pylon signage available on both Routes 18 and 27

CONTACT: Michael Branton, Vice President of Leasing
MBranton@KeyPointPartners.com

781.418.6267

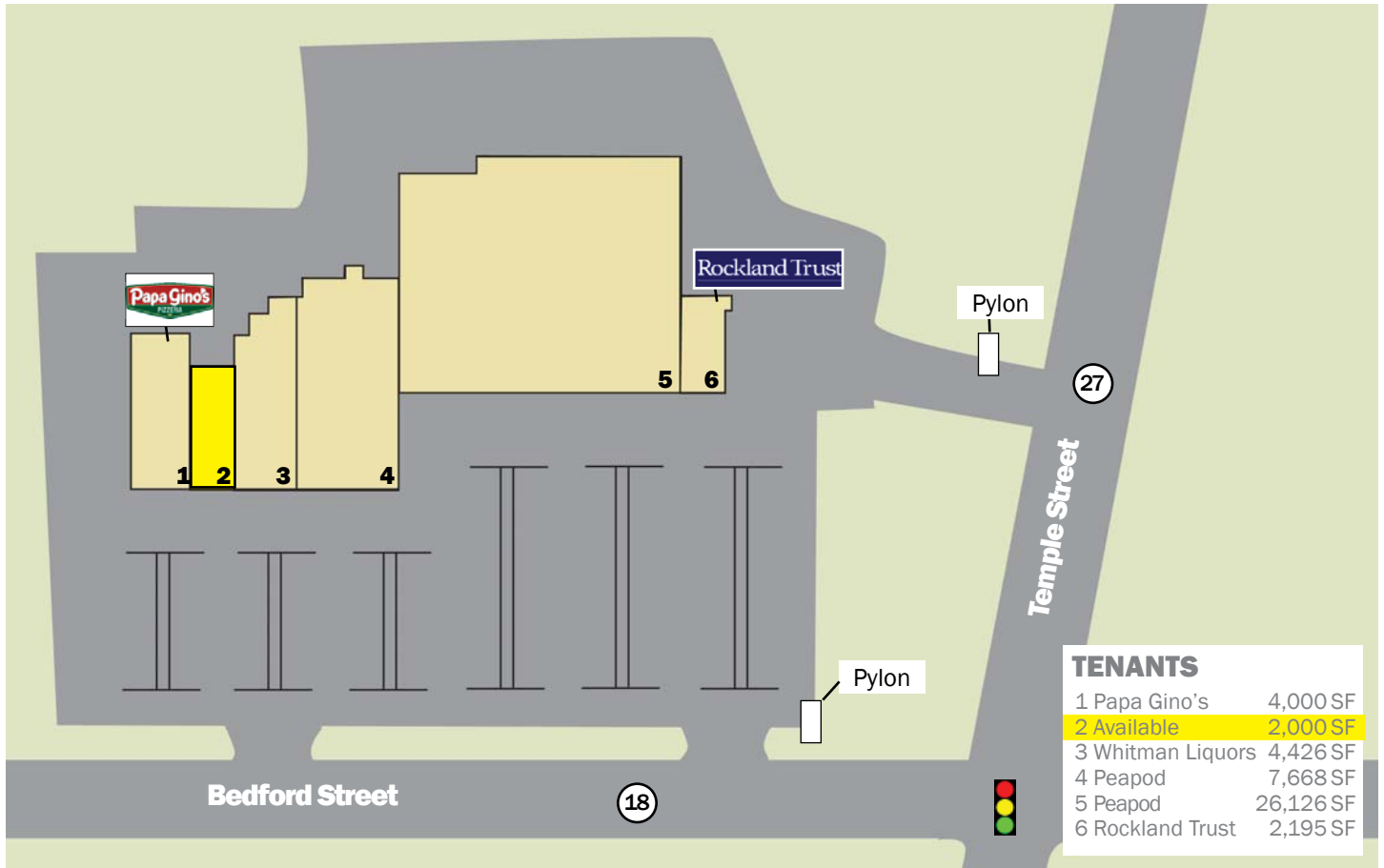
KEYPOINT
PARTNERS
KeyPointPartners.com

682 Bedford Street

Whitman, MA 02382

FOR LEASE

2,000 SF Available



DEMOGRAPHICS

2019	1 Mile	2 Mile	3 Mile
POPULATION	7,069	19,587	46,762
DAYTIME POPULATION	1,865	5,383	15,907
NUMBER OF HH	2,747	7,216	17,021
AVERAGE HH INCOME	\$94,015	\$99,508	\$99,991

ADDITIONAL INFO.

TOTAL GLA	46,415 SF
TRAFFIC COUNT	7,300 ADT (Bedford St.) 12,000 ADT (Temple St.)

CONTACT: Michael Branton, Vice President of Leasing
MBranton@KeyPointPartners.com

781.418.6267

