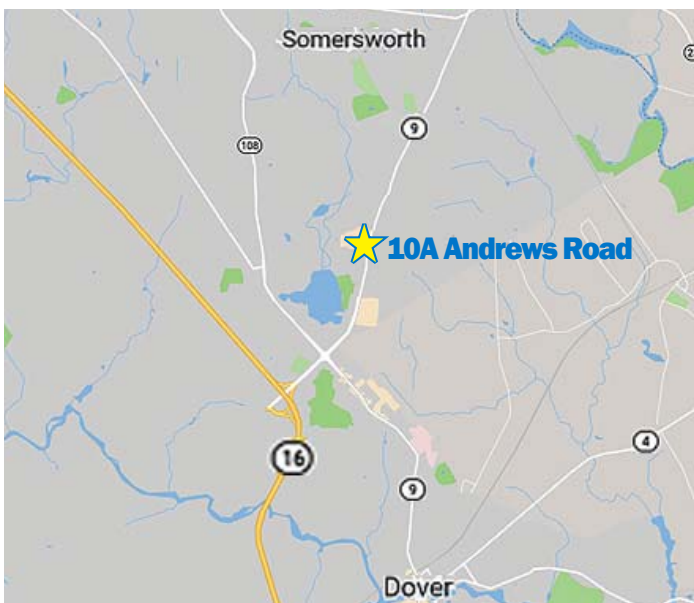


10A Andrews Road

Somersworth, NH 03878

FOR LEASE

6,134 SF Subdividable
(or potential for direct deal with landlord)



PROPERTY HIGHLIGHTS

- Freestanding building located in heavily-traveled retail node
- Shared signalized entrance with Target and Home Depot, directly across from Walmart Supercenter
- Prominent pylon signage available
- Subdividable

CONTACT: Don Mace, Vice President of Leasing
DMace@KeyPointPartners.com
781.418.6243



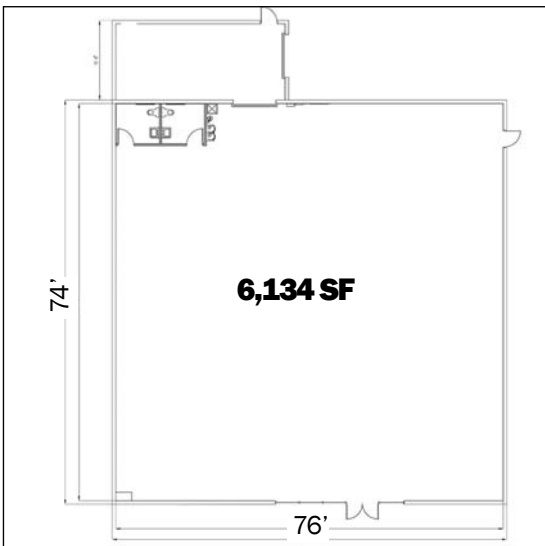
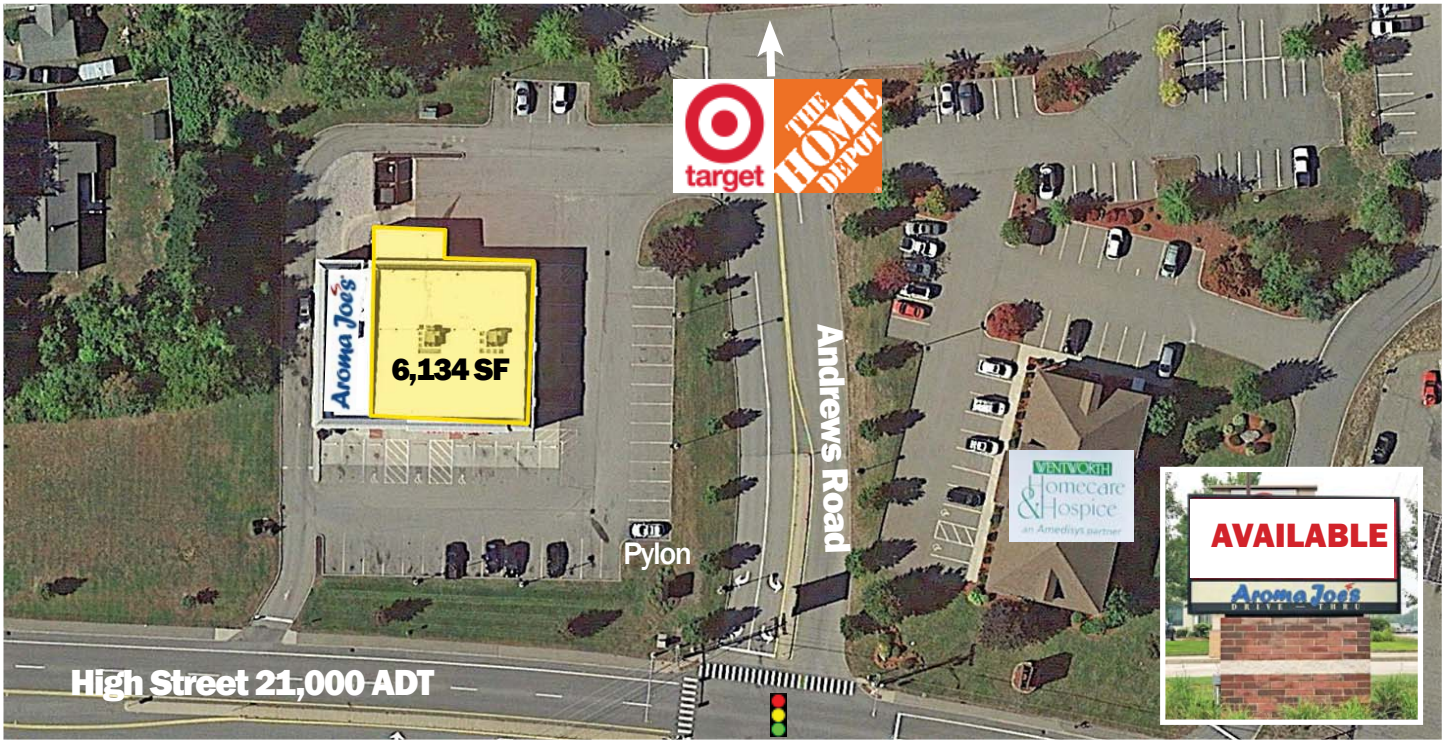
No warranty or representation, expressed or implied, is made as to the accuracy of the information contained herein, and same is submitted subject to errors, omissions, change in price, rental or other conditions, or withdrawal without notice.

10A Andrews Road

Somersworth, NH 03878

FOR LEASE

6,134 SF Subdividable
(or potential for direct deal with landlord)



DEMOGRAPHICS

2020	3 Mile	5 Mile	7 Mile
POPULATION	32,005	57,296	89,858
NUMBER OF HH	13,987	25,000	37,673
AVERAGE HH INCOME	\$87,184	\$87,674	\$89,425

ADDITIONAL INFO.

TOTAL GLA	6,134 SF
PARKING	Ample
TRAFFIC COUNT	21,000 ADT (High Street)

CONTACT: Don Mace, Vice President of Leasing
DMace@KeyPointPartners.com

781.418.6243

KEYPOINT
PARTNERS
KeyPointPartners.com