

850 Manton Avenue

Providence, RI 02909

For Lease

1,790 SF Pad



CONTACT: Don Mace
Vice President of Leasing
DMace@KeyPointPartners.com
781.418.6243

CONTACT: Rob Grady
Vice President of Leasing
RGrady@KeyPointPartners.com
781.418.6267

KEYPOINT
PARTNERS
KeyPointPartners.com

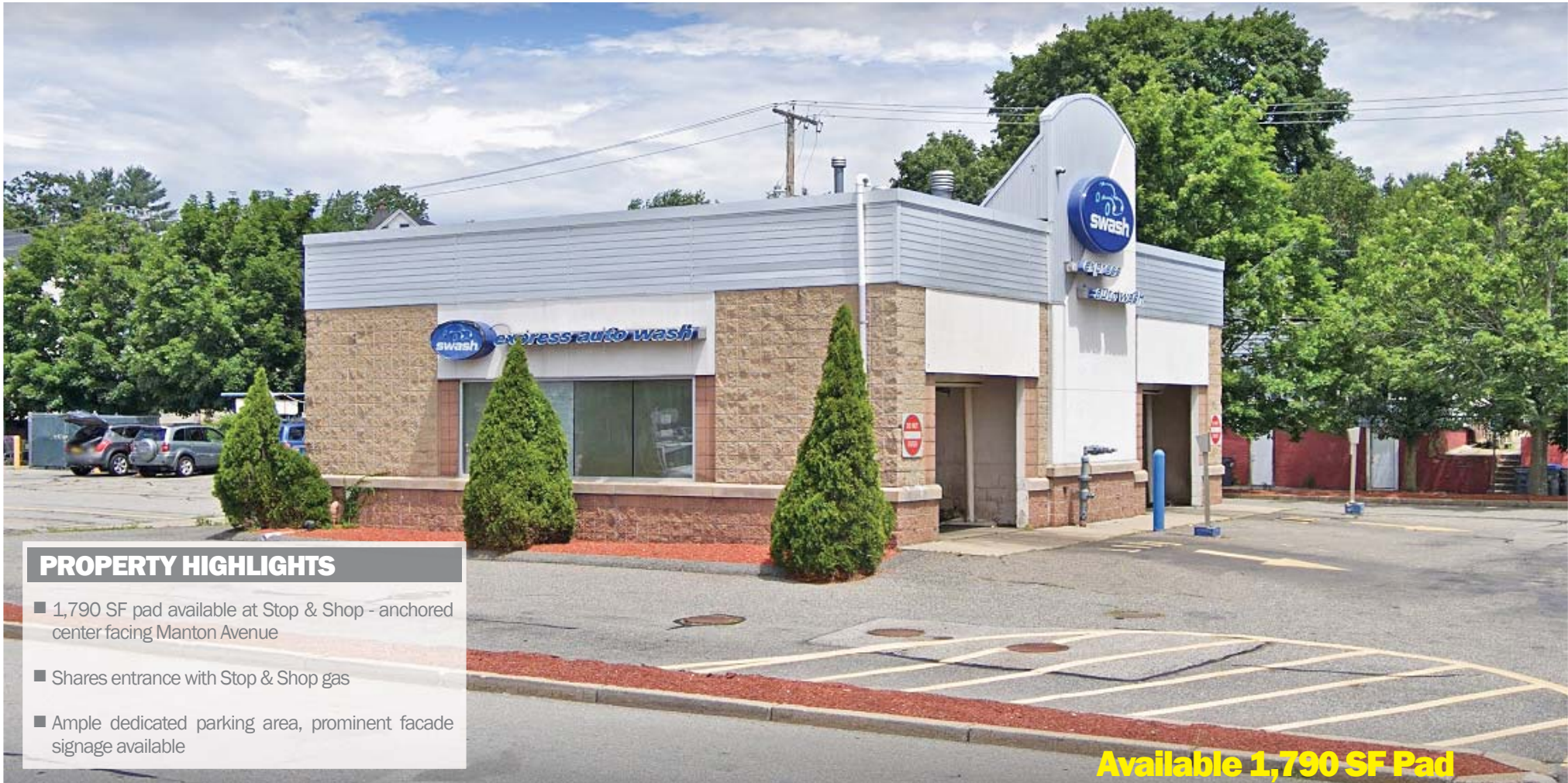
No warranty or representation, expressed or implied, is made as to the accuracy of the information contained herein, and same is submitted subject to errors, omissions, change in price, rental or other conditions, or withdrawal without notice.

850 Manton Avenue

Providence, RI 02909

For Lease

1,790 SF Pad



PROPERTY HIGHLIGHTS

- 1,790 SF pad available at Stop & Shop - anchored center facing Manton Avenue
- Shares entrance with Stop & Shop gas
- Ample dedicated parking area, prominent facade signage available

Available 1,790 SF Pad

| DEMOGRAPHICS | | | | ADDITIONAL INFO. | |
|--------------------------|----------------|---------------|---------------|------------------|--------------|
| 2021 | .5 Mile | 1 Mile | 2 Mile | TOTAL GLA | 1,790 SF Pad |
| POPULATION | 5,055 | 22,534 | 95,284 | PARKING | Ample |
| NUMBER OF HH | 1,597 | 7,851 | 33,247 | | |
| AVERAGE HH INCOME | \$70,186 | \$72,141 | \$69,958 | | |

CONTACT: Don Mace
Vice President of Leasing
DMace@KeyPointPartners.com
781.418.6243

CONTACT: Rob Grady
Vice President of Leasing
RGrady@KeyPointPartners.com
781.418.6267

KEYPOINT PARTNERS
KeyPointPartners.com

No warranty or representation, expressed or implied, is made as to the accuracy of the information contained herein, and same is submitted subject to errors, omissions, change in price, rental or other conditions, or withdrawal without notice.

850 Manton Avenue

Providence, RI 02909

For Lease

1,790 SF Pad



CONTACT: Don Mace
Vice President of Leasing
DMace@KeyPointPartners.com
781.418.6243

CONTACT: Rob Grady
Vice President of Leasing
RGrady@KeyPointPartners.com
781.418.6267

KEYPOINT
PARTNERS
KeyPointPartners.com